

Ami Polymer

FILTERS | FILMS | TUBING | HOSES | SINGLE USE ASSEMBLIES & BAGS | GASKETS & BELLOWS | INFLATABLE SEALS



**FILTRATION,
SEPARATION & PURIFICATION**
Solutions for Pharma and Biopharma Applications





About Us

Since 1998, APPL has been engaged in the business of polymer products, which ultimately provide solutions to fluid transfers, sealing and contamination controls for the pharma, biopharma, medical, laboratory, food, beverage and engineering sectors worldwide.

APPL has ISO class 7 and 8 cleanroom facilities certified with ISO 9001:2015, ISO 14001:2015, ISO 45001:2018, ISO 27001:2013, ISO 13485:2016 and ISO 15378:2017. We also have a BPOG extractables program for our products for regulatory markets worldwide.

APPL has world-class manufacturing technology with end-to-end process capabilities to fulfill the needs of customers. Our advanced facilities include laser-controlled extrusion, automated hose production lines, thermoplastic extrusion lines, automatic hydraulic presses for elastomers and polymeric components, a cutting-edge laboratory equipped with R&D machinery, in-house tooling and mold-making machinery, laser cutting machines and online printing and marking systems.

The company believes in "Be in business with ethics" and assure quick development, fastest delivery, ultimate quality and also very competitive rates.

Certification and Compliance



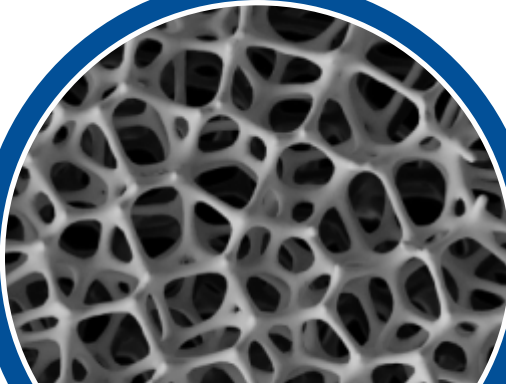
ImaPore™ Technologies & Applications

TECHNOLOGIES & PRODUCTS

- Redundant Filtration
- Sterilizing Grade Filters
- Mycoplasma Removal Filters
- Depth Filtration
- Stainless Steel Filters
- System Design
(Filtration Skid / CIP/SIP System)
- Validation Services
- Ultra Filtration Cassette
- Endotoxing Removal Filters
- Gamma Irradiated Filters

APPLICATIONS

- Small Volume Parenterals
- Large Volume Parenterals
- Monoclonal Antibodies
- Recombinant Protein
- Probiotics
- Gene-based Medicine
- Vaccines
- Ophthalmics
- Beverages



**Membrane
Manufacturing**



AVL Center



**Filter
Manufacturing**



**Housing
Manufacturing**

ImaPore™ Capsule & Disc Filter



ImaPore™ Disc Filter

Diameter	Max. Length	Inlet/Outlet	Vent
64 mm	70 mm	6-13 mm (1/4"-1/2") Stepped Hose Barb	N/A
73 mm	74 mm		N/A
56 mm	47 mm	6-9 mm (1/4"-3/8") Stepped Hose Barb	N/A
64 mm	71 mm	6-13 mm (1/4"-1/2") Stepped Hose Barb	Luer Lock



ImaPore™ Capsule Filter

Diameter	Max. Length	Inlet/Outlet	Vent/Drain
64 mm	106 mm	14 mm (9/16") Sanitary Flange	6 mm Hose Barb
		19 mm (3/4") Sanitary Flange	
	136 mm	31 mm (1 1/4") Sanitary Flange	
		6-13 mm (1/4"-1/2") Stepped Hose Barb	
	173 mm	9.6 mm (3/8") Hose Barb	



ImaPore™ Capsule Filter

Diameter	Max. Length	Inlet/Outlet	Vent/Drain
81 mm	159 mm	38 mm (1 1/2") Sanitary Flange	6 mm Hose Barb Staubli



ImaPore™ Capsule Inline Filter

Diameter	Max. Length	Inlet/Outlet	Vent/Drain
89 mm	142 mm	14 mm (9/16") Sanitary Flange	6 mm Hose Barb
	190 mm	19 mm (3/4") Sanitary Flange	
		38 mm (1 1/2") Sanitary Flange	
	233 mm	13 mm (1/2") Hose Barb	
	347 mm	14 mm (9/16") Hose Barb	
		16 mm (5/8") Hose Barb	
	585 mm	19 mm (3/4") Hose Barb	
	838 mm	25 mm (1") Hose Barb	



ImaPore™ Capsule T Line Filter

Diameter	Max. Length	Inlet/Outlet	Gauge Port	Vent/ Drain
89 mm	354 mm	38 mm (1 1/2") Sanitary Flange	14 mm (9/16") Sanitary Flange	6 mm
	592 mm	38 mm (1 1/2") Sanitary Flange	38 mm (1 1/2") Sanitary Flange	Hose Barb
	/152 mm	19 mm (3/4") Hose Barb	No top port	
(Inlet/Outlet)	845 mm			

Inlet/Outlet Connections

C

Female Luer Lok Inlet



P

Male Luer Lok Outlet



K

14 mm (9/16") Sanitary Flange

T

19 mm (3/4") Sanitary Flange



F

31 mm (1 1/4") Sanitary Flange

S

38 mm (1 1/2") Sanitary Flange



Y

9.6 mm (3/8")
Single Stepped Hose Barb

H

13 mm (1/2")
Single Stepped Hose Barb

V

14 mm (9/16")
Single Stepped Hose Barb

X

16 mm (5/8")
Single Stepped Hose Barb

M

19 mm (3/4")
Single Stepped Hose Barb

D

25 mm (1")
Single Stepped Hose Barb



B

6-13 mm (1/4"-1/2")
Multiple Stepped Hose Barb

E

6-9 mm (1/4"-3/8")
Multiple Stepped Hose Barb



S-S

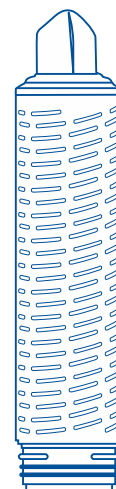
38 mm (1 1/2") Sanitary Flange
(Only for T-Type Capsule)

ImaPore™ Cartridge Filter



Cartridge Filters

Material of Construction	Nominal Length	Adaptor	Seal Material
PES	5"	226/Fin	Silicone
PVDF	10"	226/Flat	EPDM
PTFE	20"	222/Fin	Viton
Glass Fibre	30"	222/Flat	Teflon
Polypropylene	40"	Double Open End	
Nylon		Optiseal Type	



ImaPore™ Gas Filtration Filter Series

Hydrophobic Filter with High Retention Rates



FEATURES

- High retention rates
- Low pressure differential
- Efficient mycoplasma, bacteria and particulate retention

APPLICATIONS

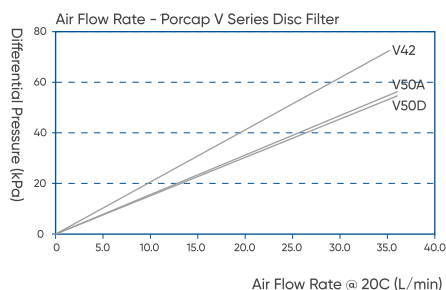
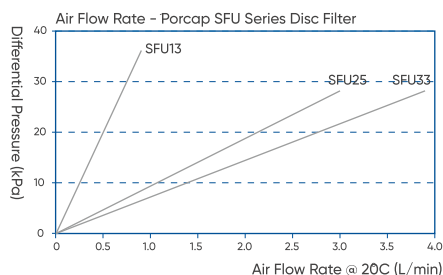
- Vent Filters for fermentors, tanks, etc.
- Sterile-grade filtration for compressed air, oxygen, nitrogen, etc.

Operating Conditions

Max Operating Temperature	50°C
Max Differential Pressure	0.24 Mpa / 25°C
	0.42 Mpa / 25°C (only for V50D)

Biological Safety

Endotoxins	<0.25 EU / ml
Bio-compatibility	Meet the requirement of USP<87> In Vitro Cytotoxicity Test; Meet the criteria of the USP<88> Biological Reactivity Test for Class VI-121° C plastics



FEATURES

- Inherently hydrophobic membrane
- High retention rates
- Low pressure differential
- Efficient mycoplasma, bacteria and particulate retention

APPLICATIONS

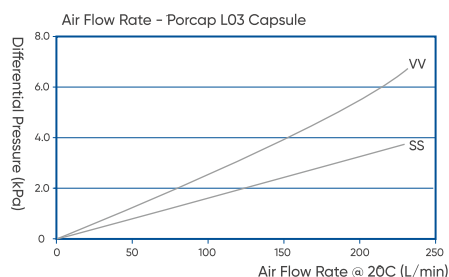
- Vent Filters for fermentors, tanks, etc.
- Sterile-grade filtration for compressed air, oxygen, nitrogen, etc.

Operating Conditions

Max Temperature	80°C
Max Differential Pressure	0.55 MPa / 25°C
	0.1 MPa / 80°C

Biological Safety

Endotoxins	<0.25 EU / ml
Bio-compatibility	Meet the requirement of USP<87> In Vitro Cytotoxicity Test; Meet the criteria of the USP<88> Biological Reactivity Test for Class VI-121°C plastics



Stainless Steel Housings & Holder



**Sanitary Liquid
Filter Housing**

Vent Housing



**Gas Filter
Housing**

**Steel Membrane
Holder**



Our Presence In World



Our Branches in India

BADDI (H.P.)

+91 9816 595 011/+91 9218 595 011
baddi@amipolymer.com

BENGALURU

+91 8123 023 922
support1@amipolymer.com

CHENNAI

+91 7738 788 877
chennai@amipolymer.com

DELHI

+91 9977 600 935
harsh.s@amipolymer.com

GOA

+91 9223 290 943 / +91 9223 290 940
goa@amipolymer.com

AHMEDABAD

+91 9152 032 305/ +91 9712 588 819
guj@amipolymer.com

HYDERABAD

+91 7700 908 414/ +91 9515 113 662
hybd@amipolymer.com

INDORE

+91 9712 588 819 / +91 9512 273 730
sanjay.p@amipolymer.com

MUMBAI

+91 9223 290 943 / +91 9512 283 830
mumbai@amipolymer.com

HARIDWAR

+91 9977 600 935/+91 7718 888 743
roorkee@amipolymer.com

SIKKIM

+91 9512 274 748
sikkim@amipolymer.com

VIZAG

+91 7700 908 414/ +91 9515 113 662
hybd@amipolymer.com

PUNE

+91 9512 298 787
hrishikesh.g@amipolymer.com

SILVASSA

+91 9223 290 934 / +91 9512 235 354
rohit.s@amipolymer.com

ROI

+91 9223 290 936
info@amipolymer.com

CORPORATE OFFICE

Office No. 6 & 7, Upper Basement, Western Edge II, Behind Metro Stores, W.E. Highway, Borivali, Mumbai, Maharashtra - 400066
Cell: +91 9081 488 825/ +91 9223 290 943

USA OFFICE

800 West Cummings Park, Suite 3325 | Woburn, Massachusetts 01801
Cell: +1 (978) 482-5400/+1 (267) 810-3834 | Email: usa@amipolymer.com

MANUFACTURING UNIT- I

Plot No. 66-D/E, Govt. Industrial Estate, Near Beekaylon Factory, Masat, Silvassa, UT of Dadra & Nagar Haveli and Daman & Diu, India 396230

MANUFACTURING UNIT- II

Survey No. 106/2/1, 106/2/2, 113/3/P1, Opp. Guarniflon India Pvt. Ltd, Karajgam Road, Village Kala, Khanvel, UT of Dadra & Nagar Haveli and Daman & Diu, India 396230



Cell: +91 7436 003 836/+91 8691 013 934 | For Export +91 8691 013 939
Email: info@amipolymer.com | enquiry@amipolymer.com

APPL CAT-13/8P/MAR-2025/REV-1